

**CODE NUMBER**

3366131

**DESCRIPTION**

Sloan Optima® Air Sensor-Operated Wall - Surface - ADA Hand Dryer EHD-702 208/277V, Sloan Optima® Air Sensor-Operated Wall - Surface - ADA Hand Dryer.

**DETAILS**

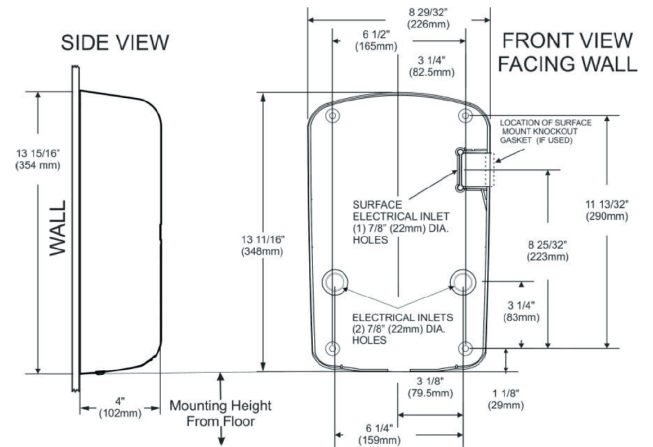
- Finish: Brushed Nickel (BN)
- Voltage: 208/277V ( )
- Wattage: 50/60Hz ( )
- Amperage: 3.6-4.0 ( )
- Mounting: Wall - Surface - ADA
- Power Type: Hardwired
- Depth: 4" (102mm)
- Height: 13 15/16" (354mm)
- Width: 9 39/250" (233mm)

**FEATURES**

- Hygienic hand drying solution
- 14 second dry time
- Electric Specifications: 208-277V 5.6 – 6.2A
- Meets ADA requirements without the need of a recess kit
- Adjustable speed and sound (High-Low)
- Adjustable Heat (High-Low-Off)
- 95% cost savings vs. paper towels
- Weight: 8-10 lbs.
- Vandal resistant cover design
- Suggested Mounting Heights for Ideal Performance (from floor to bottom of dryer): Men: 45" (114 cm), Women: 43" (109 cm), Teenagers: 41" (104 cm), Children: 35" (89 cm), ADA: 37" (94 cm). Note: When mounting for any user ensure that it is mounted below the 48" ADA Maximum
- Available in Polished White and Brushed Nickel
- 35-second lockout feature if hands are not removed
- Externally visible Red LED light that flashes error codes to assist in troubleshooting and identify if filter has been clogged
- Virtually maintenance free
- Air temperature of up to 141°F (61°C) at a 72°F (22°C) ambient room temperature at the hands (4 inches [102 mm] below air outlet).
- Quantity Recommendations: 1 dryer for every 2 sink stations is sufficient for most applications. For high traffic applications we suggest 1 dryer per sink station.
- Variations: Available in 2 finishes/colors
- Optional Add Ons: Wall Guards (White, Black, Stainless)

**DOWNLOADS**

- [OPTIMA AIR™ HAND DRYER EHD-700 SERIES](#)
- [Additional Downloads](#)



**COMPLIANCES & CERTIFICATIONS**



(BAA Compliant, Proposition 65, cUL Certified, UL Certified)

**RECOMMENDED SPECIFICATION**

EHD-702 Brushed Nickel Finish, 208V

**NOTES**

All information contained within this document subject to change without notice.

Sloan 10500 Seymour Ave, Franklin Park, IL 60131

Phone: 800.982.5839 • Fax: 800.447.8329 • [sloan.com](http://sloan.com)